

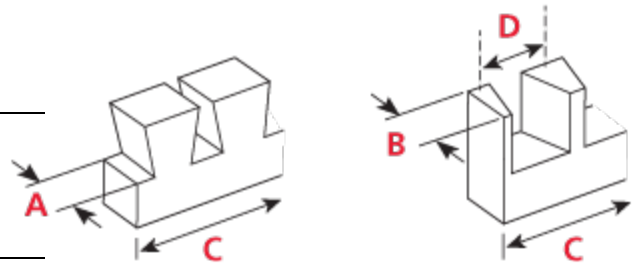
Leigh RTJ400 Technical Specifications

CAPACITIES

NOTE: The Leigh RTJ400's actual comb pitch is 0.781"(19.84mm), therefore all joint sizes listed here are approximations of this dimension.

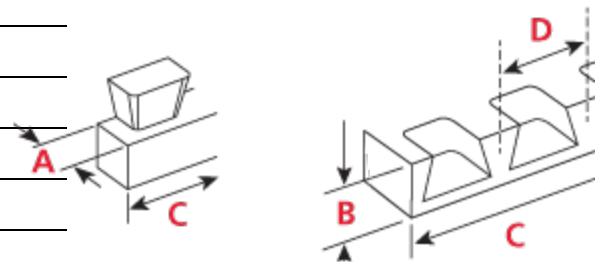
Through Dovetails

	MIN	MAX
A Tail Board Thickness		
Full pitch	1/8" (3mm)	1"(26mm)
Half pitch	1/8" (3mm)	1"(26mm)
B Pin Board Thickness		
Full pitch	1/8" (3mm)	13/16"(21mm)
Half pitch	1/8" (3mm)	5/8"(16mm)
C Board Width		
Full pitch	1-7/16"(37mm)	16"(406mm)
Half pitch	23/32"(18mm)	15-3/4"(400mm)
D Pin Centers		
Full pitch	FIXED WIDTH	
Full pitch	1-1/2"(40mm)	
Half pitch	3/4"(20mm)	



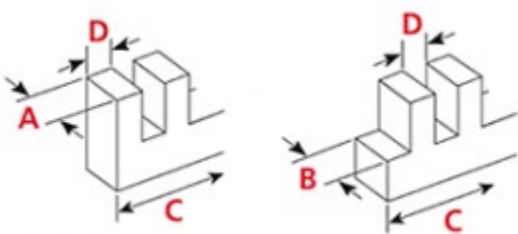
Half-Blind Dovetails

	MIN	MAX
A Tail Board Thickness	3/8"(9.5mm)	1"(26mm)
B Pin Board Thickness	7/16"(11mm)	1"(26mm)
C Board Width	21/32"(17mm)	15-7/8"(401mm)
D Pin Centers	3/4"(20mm)	



Box Joints (Finger Joints)

A	Pin Board Thickness
B	Socket Board Thickness
C	Board Width
D	Pin and Socket Sizes 3/32" (2.4mm), 3/16" (4.8mm), 3/8" (9.5mm), 3/4" (19mm)



JOINT SIZE	A & B MIN	A & B MAX	C MIN	C MAX	
3/32"(2.4mm)	1/8"(3mm)	3/8"(9.5mm)	9/32"(7mm)	4"(102mm)	0.098"(2.49mm)
3/16"(4.8mm)	1/8"(3mm)	5/8"(16mm)	9/16"(14mm)	8" (203mm)	0.195"(4.95mm)
3/8"(9.5mm)	1/8"(3mm)	1"(25.4mm)	1-5/32"(29mm)	16"(406mm)	0.390"(9.91mm)
3/4"(19mm)	1/8"(3mm)	1"(25.4mm)	2-11/32"(60mm)	15-5/8"(397mm)	0.781"(19.84mm)

JIG SIZE AND WEIGHT

Length: 27" (686mm)
Height: 4" (102mm)
Depth: 6" (152.5mm)
Weight: 11 lbs. (5 kg)

Package (carton) size:
29-1/4" x 7" x 5" (743mm x 178mm x 127mm)

STANDARD JOINERY

Through Dovetails (2 Pitches)
Half-Blind Dovetails, Single Pass
Rabbeted Half-Blind Dovetails
Box (Finger) Joints, 3/32", 3/16", 3/8" and 3/4"

End-on-End Dovetails
Asymmetrical Joints (Through and Half-Blind)
Simple Angled Joints